

Surface Mount RF Transformer

30 to 1800 MHz



ADTL2-18

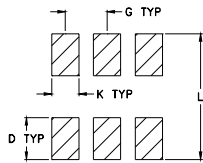
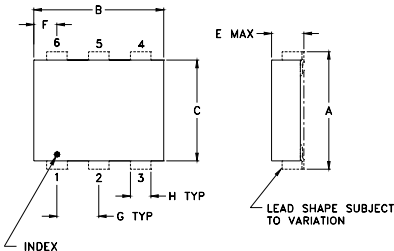
Maximum Ratings

Operating Temperature	-20°C to 85°C
Storage Temperature	-55°C to 100°C
RF Power	250 mW

Pin Configuration (kn)

primary dot	1
primary	3
secondary dot	6
secondary	4
secondary ct	—
not used	2,5

Outline Drawing



FOOT PRINT FOR PC DESIGN

Outline Dimensions (Inch/mm)

A	B	C	D	E	F	G	H
.280	.310	.220	.100	.112	.055	.100	.030
7.11	7.87	5.58	2.54	2.84	1.40	2.54	0.76

J	K	L	wt.
—	.065	.300	grams
—	1.65	7.62	.40

config. G

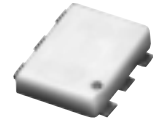


Features

- excellent amplitude unbalance, 0.3 dB typ. and phase unbalance, 3 deg. typ. in 1 dB bandwidth

Applications

- baluns
- wideband impedance matching
- cellular
- PCN



CASE STYLE: CD542
PRICE: \$3.95 ea.
QTY. (10-49)

Electrical Specifications

Ω RATIO	FREQUENCY (MHz)	INSERTION LOSS*			PHASE UNBALANCE** (Deg.) Typ.		AMPLITUDE UNBALANCE (dB) Typ.	
		3 dB MHz	2 dB MHz	1 dB MHz	1 dB bandwidth	2 dB bandwidth	1 dB bandwidth	2 dB bandwidth
2	30-1800	30-1800	—	100-1500	3	—	0.3	—

* Insertion Loss is referenced to mid-band loss, 0.6 dB typ. Limited by unbalance.

** Deviation from 180°

Typical Performance Data

FREQUENCY (MHz)	INSERTION LOSS AVG. (dB)	INPUT R. LOSS (dB)	AMPLITUDE UNBALANCE (dB)	PHASE UNBALANCE (Deg.)
30.00	0.73	10.06	1.07	5.86
50.00	0.73	10.01	0.95	3.68
100.00	0.74	9.96	0.85	1.64
500.00	0.64	11.73	0.64	2.41
1000.00	0.76	13.14	0.25	3.74
1500.00	1.00	14.50	0.18	1.90
1550.00	1.06	14.22	0.22	1.55
1600.00	1.16	13.58	0.24	1.24
1700.00	1.43	11.56	0.30	0.50
1800.00	1.85	9.44	0.34	0.29

